

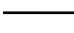


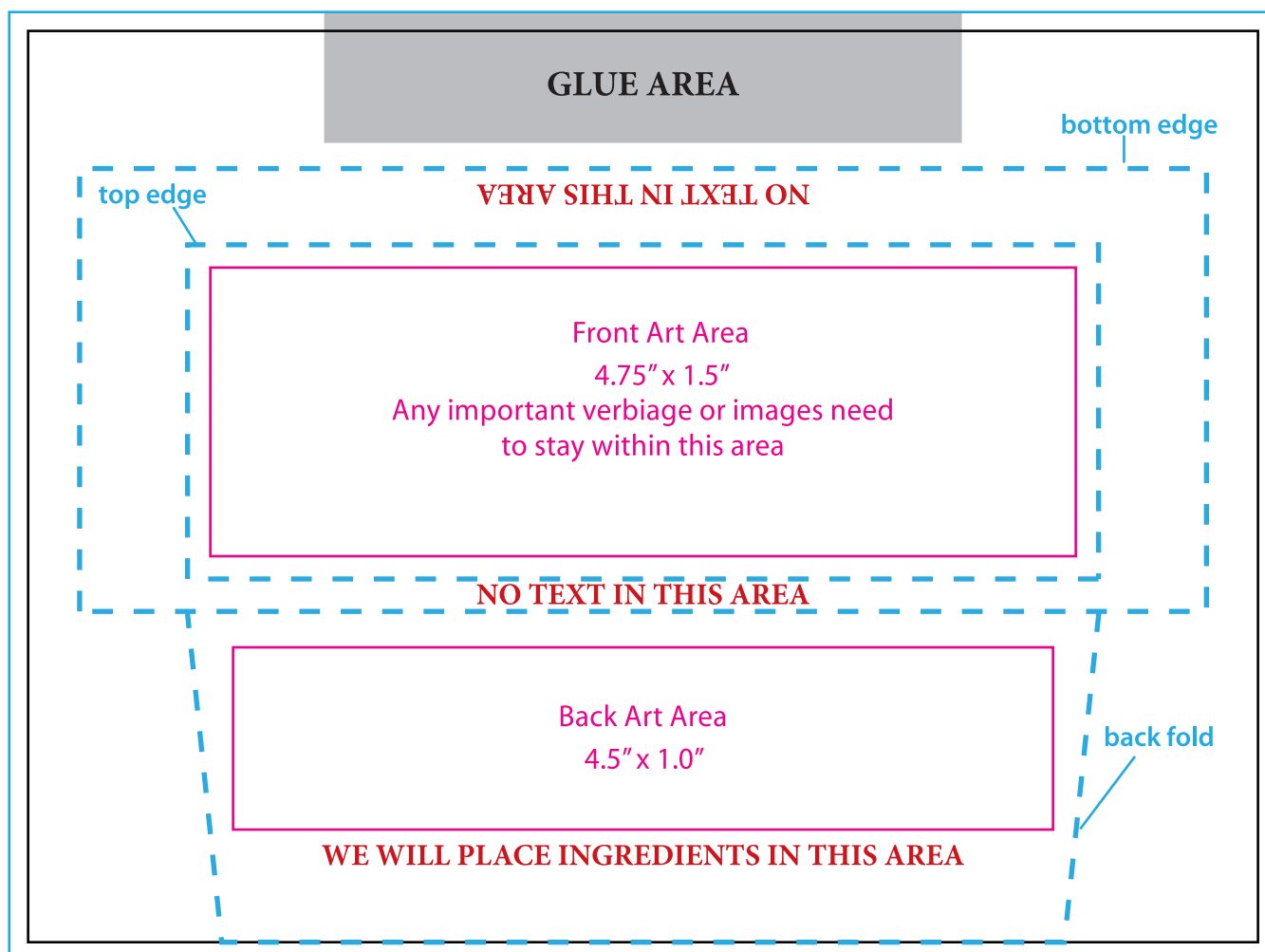




ARTWORK REQUIREMENTS

You can use vector artwork or high resolution pixel-based artwork for your chocolate bar wrappers. Important text and logos should be positioned within the safe "Imprint Area". Background designs and patterns can extend past this area. We recommend not to print any text on the sides of the wrappers.

-  = **Glue Area**
-  = **Fold Lines**
-  = **Cut Line**
-  = **Bleed Area**
-  = **Image Area**



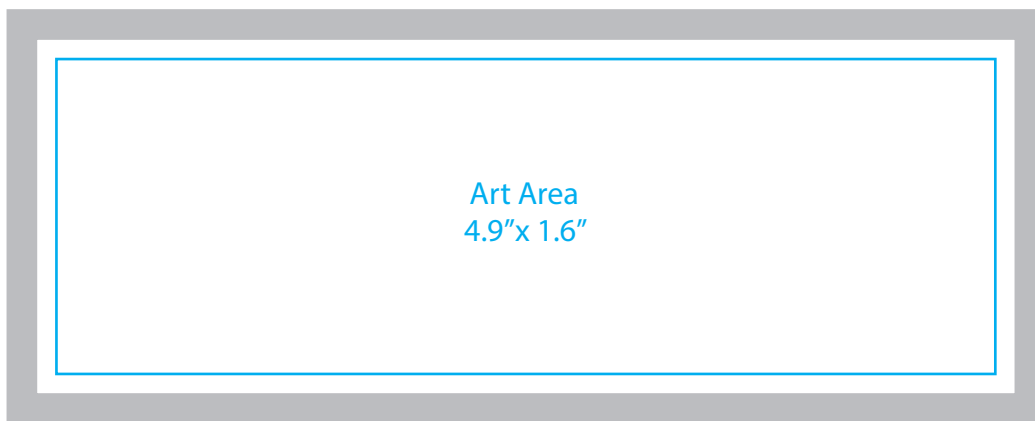
- Only add artwork within the "Your Art Here" Layer
- Minimum type size = 6pt



ARTWORK REQUIREMENTS

Vector artwork (PDF, EPS, or AI) is required for the production of custom molds.

Chocolate Bar



Logo Area



Chocolate size

Fonts must be at least 14pt. Italics ok upon review of final art