

USE ONLY FOR FULLCOLOR CUSTOMIZED LID ART
\$3 PER UNIT UPCHARGE APPLIES TO THIS OPTION.

8oz. or 1lb. PRINTED LID

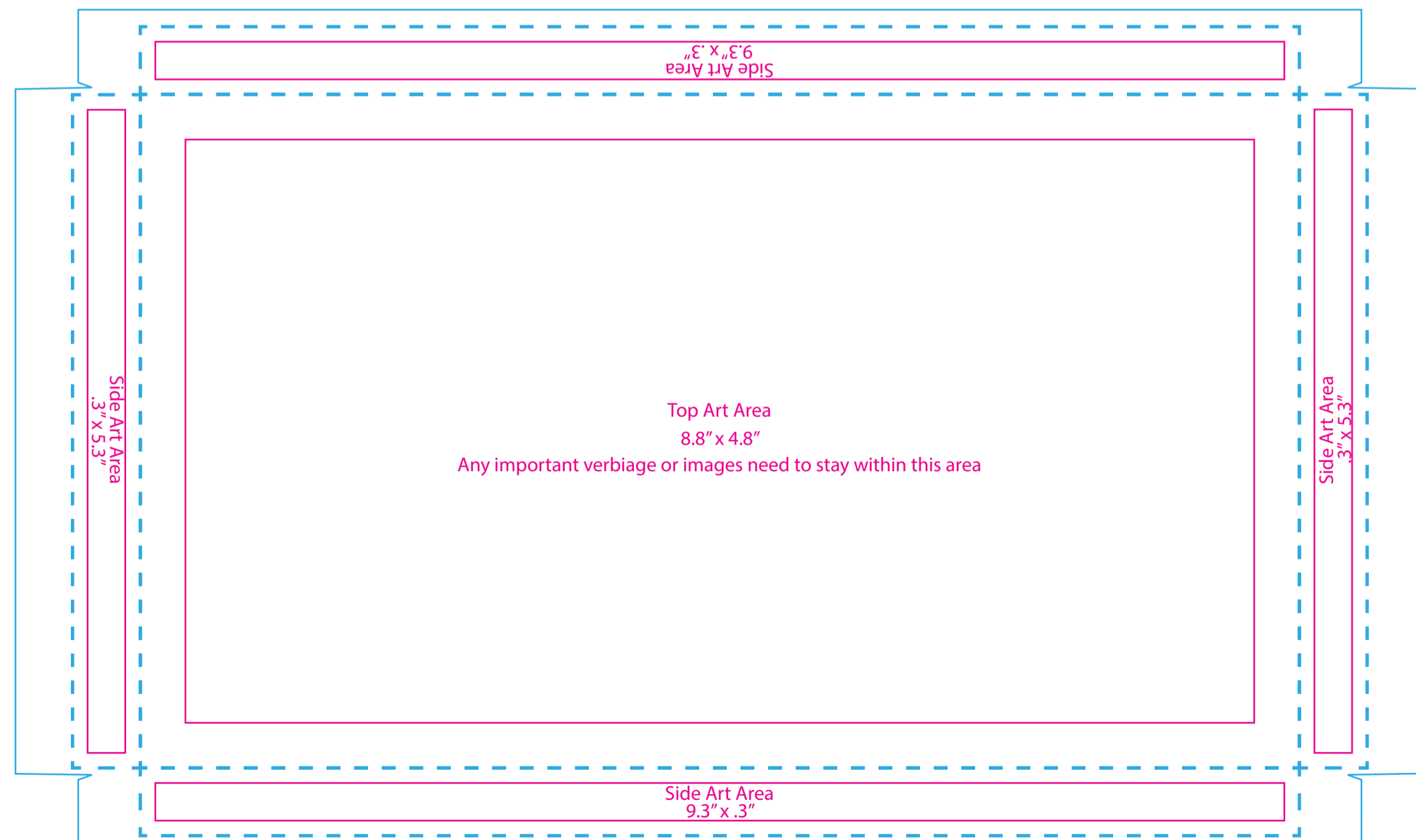
Your background color or design can extend past the **Art Areas** and out to the **Bleed Area**, but all text and logos must remain inside the **Art Area**.

For best results and best print quality:

- Use PMS colors whenever possible. We can't color match without them.
- Make sure your images are embedded.
- Vector art works best, but if you are using raster art make sure your raster images are at least 300dpi and are sized in your image editing application to fit the print area(s) in the template.

If you follow these guidelines and your image is clear when viewed at 100% in your image editor, then it is likely to print clear on your final product.

- = Glue Area
- - - = Fold Lines
- = Cut Line
- = Bleed Area
- = Image Area



PRINTED GIFT BAND

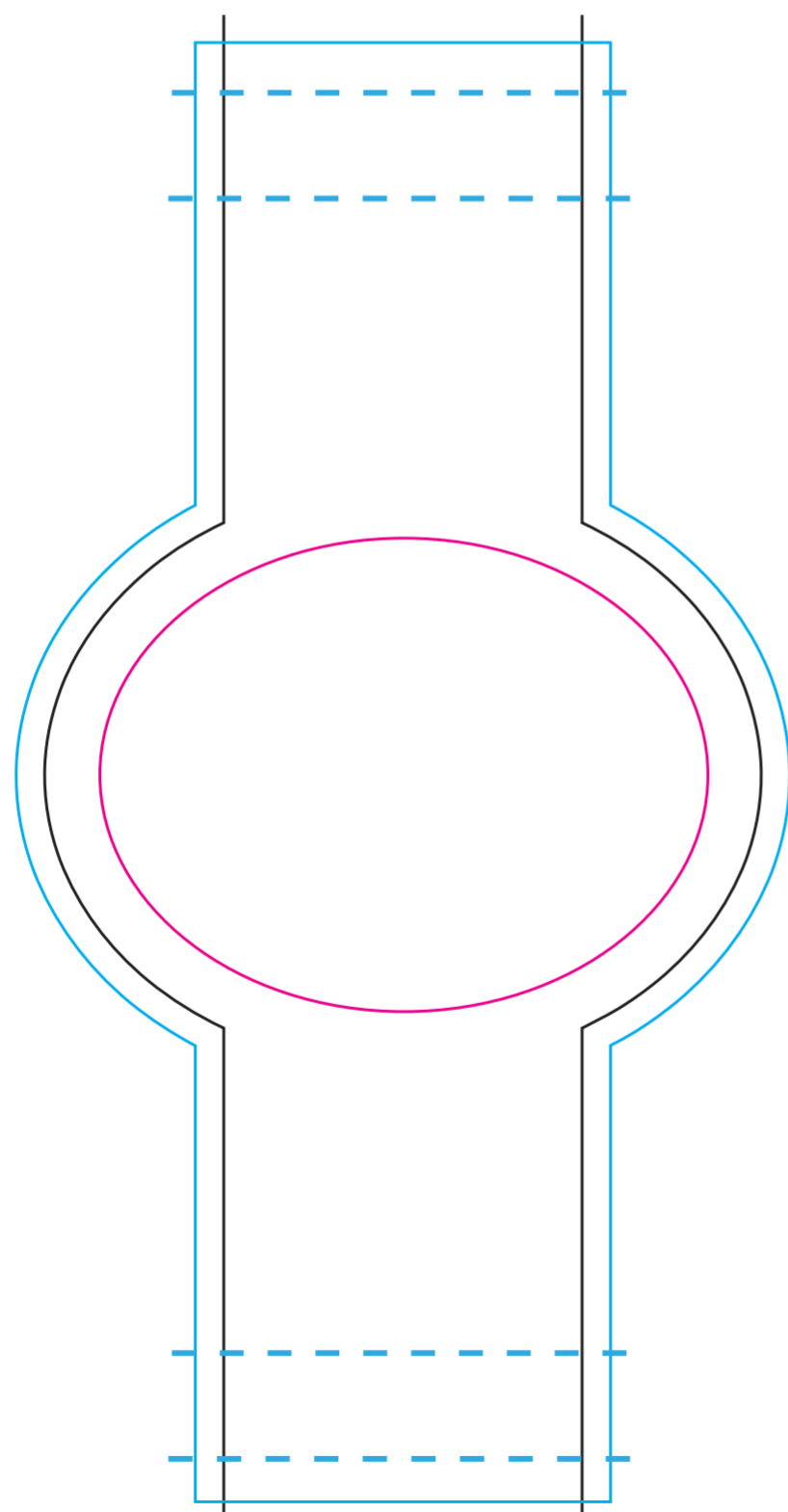
Your background color or design can extend past the **Art Areas** and out to the **Bleed Area**, but all text and logos must remain inside the **Art Area**.

For best results and best print quality:

- Use PMS colors whenever possible. We can't color match without them.
- Make sure your images are embedded.
- Vector art works best, but if you are using raster art make sure your raster images are at least 300dpi and are sized in your image editing application to fit the print area(s) in the template.

If you follow these guidelines and your image is clear when viewed at 100% in your image editor, then it is likely to print clear on your final product.

- = Glue Area
- - = Fold Lines
- = Cut Line
- = Bleed Area
- = Image Area

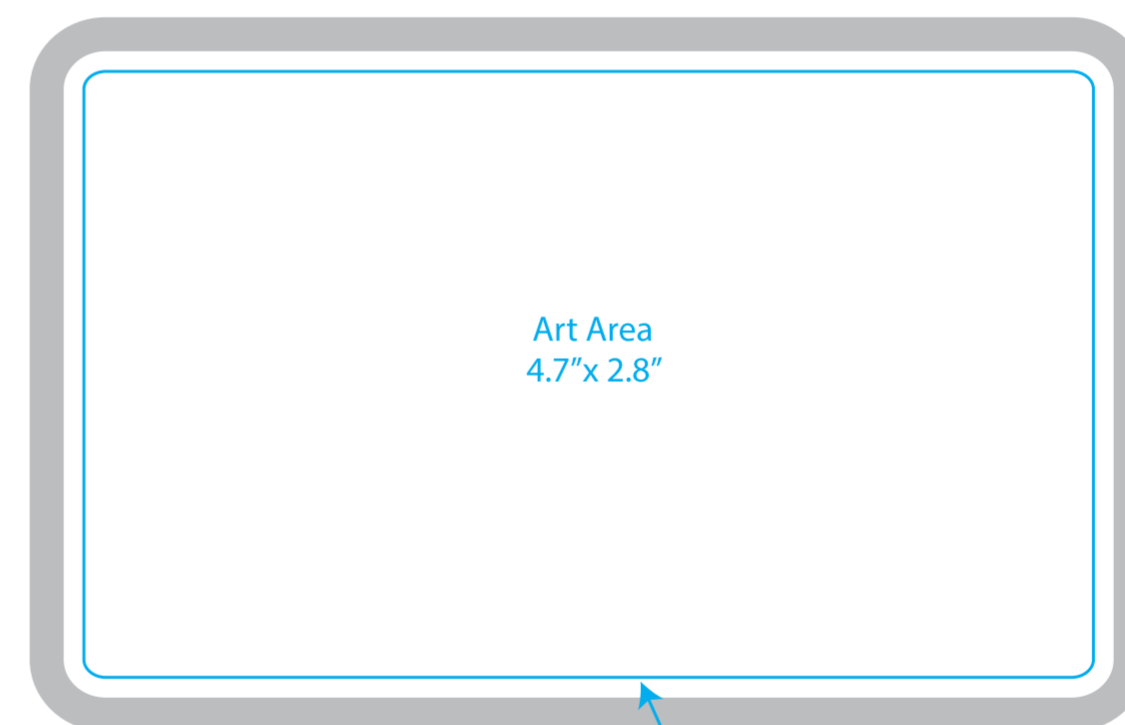


3"x 5" CHOCOLATE CENTERPIECE

Art must be VECTOR.
White art is surface level. Black art is engraved.

In order for your art to show well in chocolate:

- Fonts should be at least 12pt
- Lines and details, and spaces in between lines and details should be at least a 1pt thickness and prominent lines should be thicker.
- Convert all fonts to objects



Artwork must remain inside this line