

8oz & 1lb STRAIGHT GIFT BAND

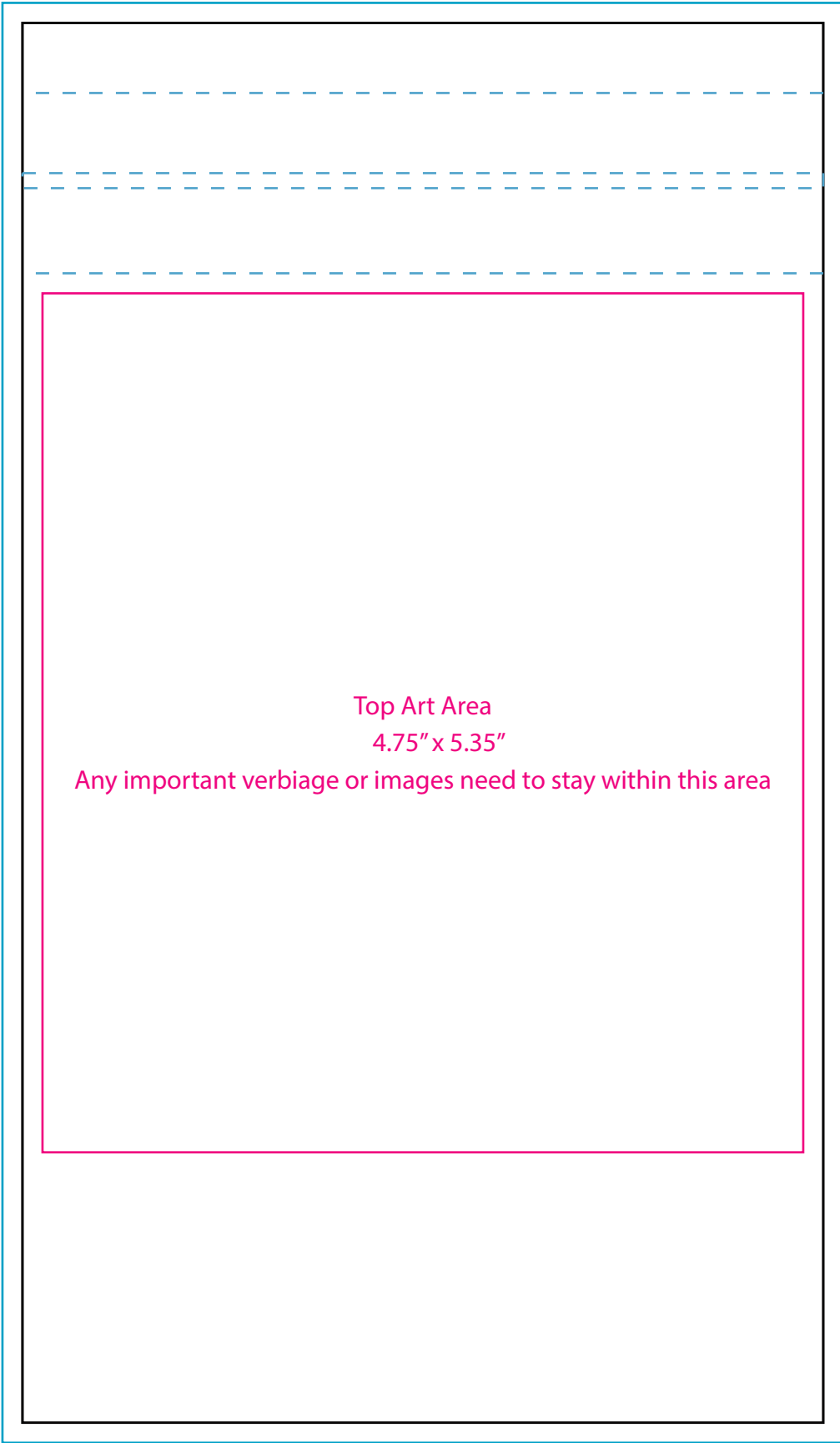
Your background color or design can extend past the **Art Areas** and out to the **Bleed Area**, but *all text and logos must remain inside the Art Area.*

For best results and best print quality:

- Use PMS colors whenever possible. We can't color match without them.
- Make sure your images are embedded.
- Vector art works best, but if you are using raster art make sure your raster images are at least 300dpi and are sized in your image editing application to fit the print area(s) in the template.

If you follow these guidelines and your image is clear when viewed at 100% in your image editor, then it is likely to print clear on your final product.

- Glue Area
- - = Fold Lines
  - = Cut Line
  - = Bleed Area
  - = Image Area

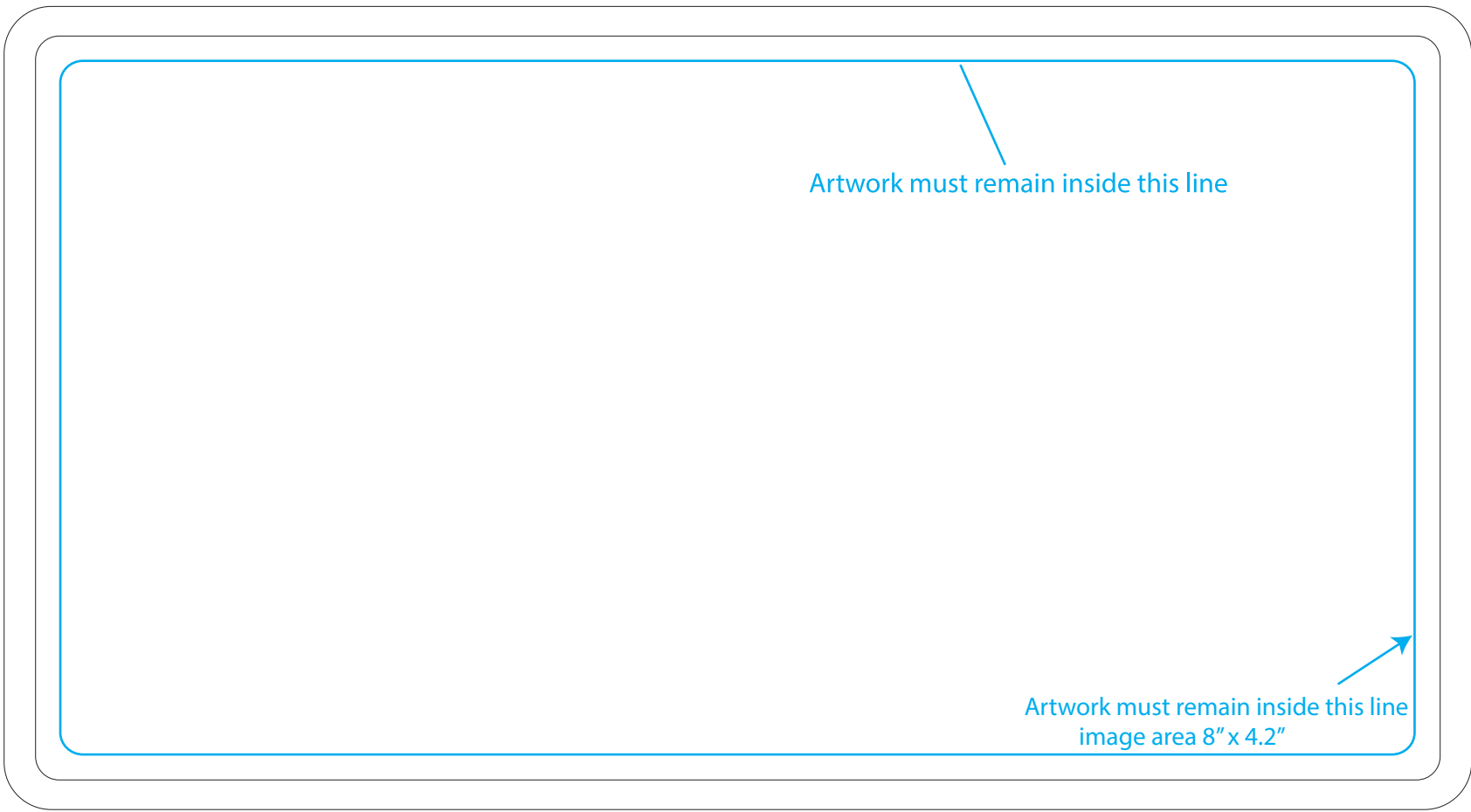


8oz. or 1lb . CHOCOLATE BAR

Art must be VECTOR.  
White art is surface level. Black art is engraved.

In order for your art to show well in chocolate:

- Fonts should be at least 12pt
- Lines and details, and spaces in between lines and details should be at least a 1pt thickness and prominent lines should be thicker.
- Convert all fonts to objects



# 8oz & 1lb Fully Custom-Printed Lid






USE ONLY FOR FULLCOLOR CUSTOMIZED LID ART  
\$4 PER UNIT UPCHARGE APPLIES TO THIS OPTION.

Your background color or design can extend past the **Art Areas** and out to the **Bleed Area** , but all text and logos must remain inside the **Art Area**.

For best results and best print quality:

- Use PMS colors whenever possible. We can't color match without them.
- Make sure your images are embedded.
- Vector art works best, but if you are using raster art make sure your raster images are at least 300dpi and are sized in your image editing application to fit the print area(s) in the template.

If you follow these guidelines and your image is clear when viewed at 100% in your image editor, then it is likely to print clear on your final product.

-  = Glue Area
-  = Fold Lines
-  = Cut Line
-  = Bleed Area
-  = Image Area



# Applications and File Types

All artwork should be PC-formatted and compatible with Adobe Illustrator CS4 or lower.

**ILLUSTRATOR:** “Create outlines” on all fonts. **.ai** and **.eps** are acceptable file formats. Embed images - linked images won’t work.

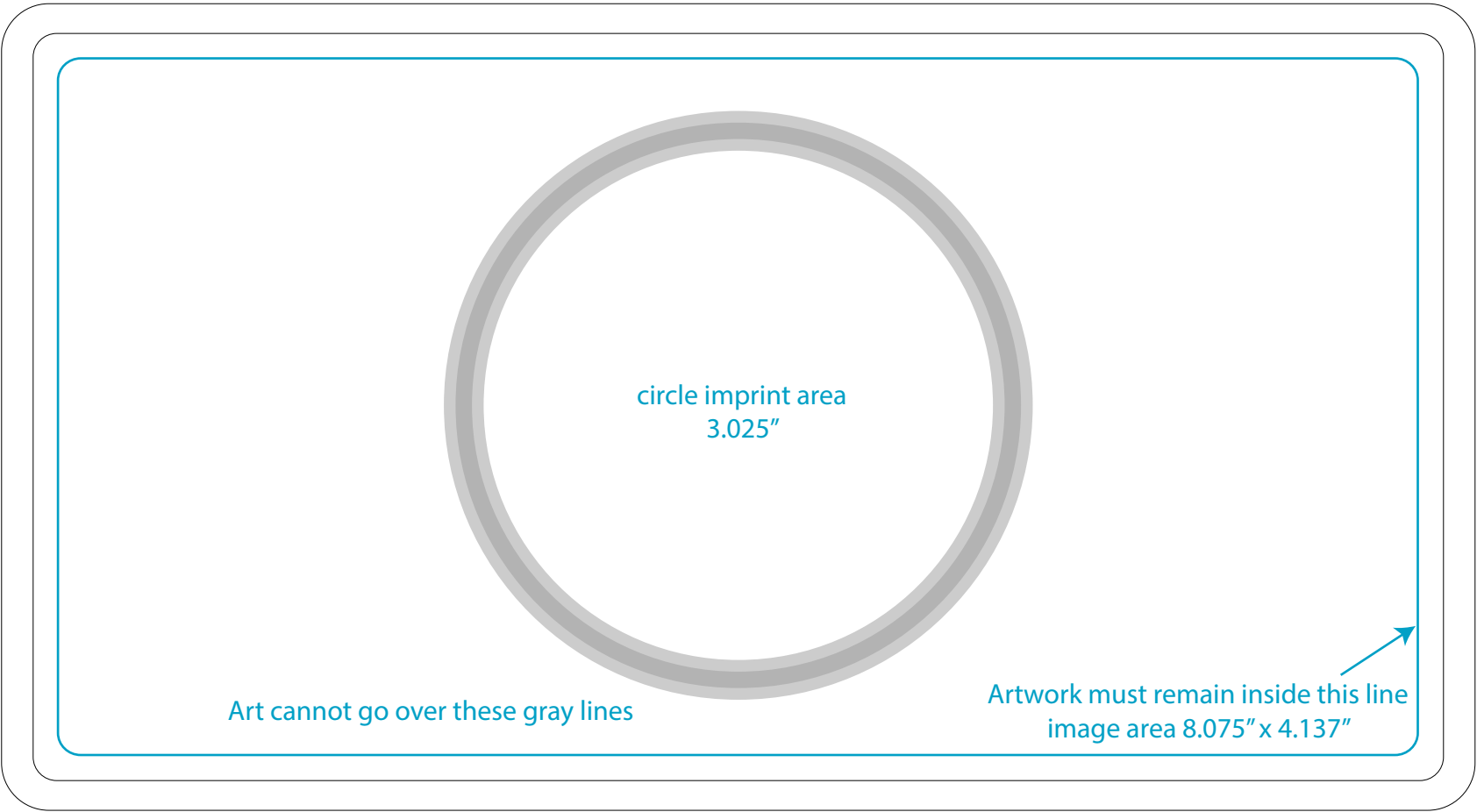
**FREEHAND:** All fonts must “convert to paths”. **.eps** is the acceptable file format. Embed images - linked images won’t work.

**COREL DRAW:** Change all fonts to “curves”. **.ai** is the only acceptable file format. Embed images - linked images won’t work.

**PHOTOSHOP:** **.tif, .jpg .psd, .gif** or **.bmp** files are not accepted for making chocolate molds.

Art services are available to convert these files types to vector. Please contact your sales rep for more information.

## 8oz. or 1lb. CHOCOLATE COMBO BAR with CIRCLE CENTER



**Art must be VECTOR art.**  
**Black art is engraved. White art is raised.**

In order for your art to show well in chocolate:

- fonts should be at least 12pt
- lines and details, and spaces in between lines and details should be at least a 1pt thickness and prominent lines should be thicker.
- convert all fonts to objects

# Applications and File Types

All artwork should be PC-formatted and compatible with Adobe Illustrator CS4 or lower.

**ILLUSTRATOR:** “Create outlines” on all fonts. **.ai** and **.eps** are acceptable file formats. Embed images - linked images won’t work.

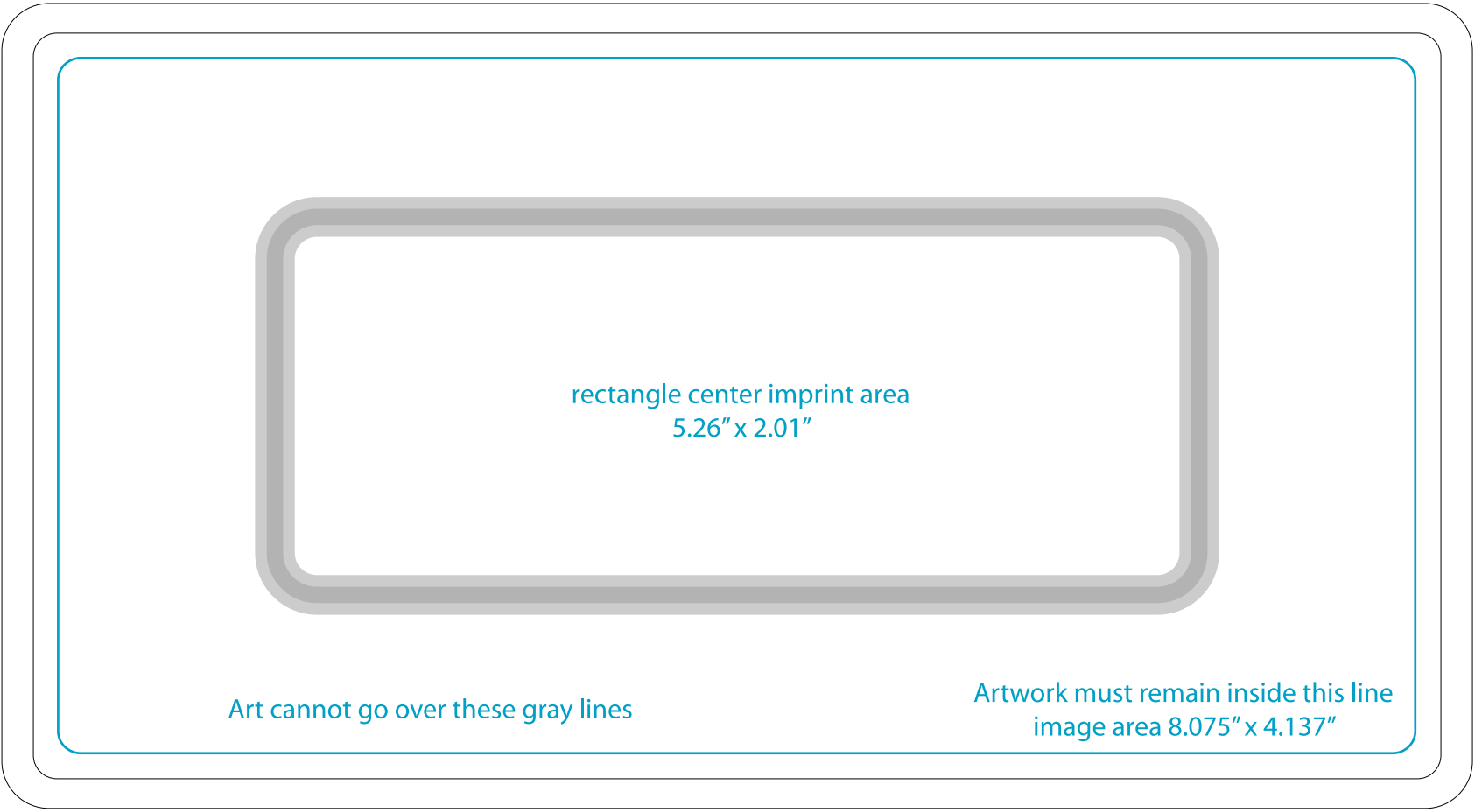
**FREEHAND:** All fonts must “convert to paths”. **.eps** is the acceptable file format. Embed images - linked images won’t work.

**COREL DRAW:** Change all fonts to “curves”. **.ai** is the only acceptable file format. Embed images - linked images won’t work.

**PHOTOSHOP:** **.tif, .jpg, .psd, .gif** or **.bmp** files are not accepted for making chocolate molds.

Art services are available to convert these files types to vector. Please contact your sales rep for more information.

## 8oz. or 1lb. CHOCOLATE COMBO BAR with RECTANGLE CENTER



**Art must be VECTOR art.**  
**Black art is engraved. White art is raised.**

In order for your art to show well in chocolate:

- fonts should be at least 12pt
- lines and details, and spaces in between lines and details should be at least a 1pt thickness and prominent lines should be thicker.
- convert all fonts to objects

# Applications and File Types

All artwork should be PC-formatted and compatible with Adobe Illustrator CS4 or lower.

**.ai** and **.eps** are acceptable file formats. Embed images - linked images won't work.

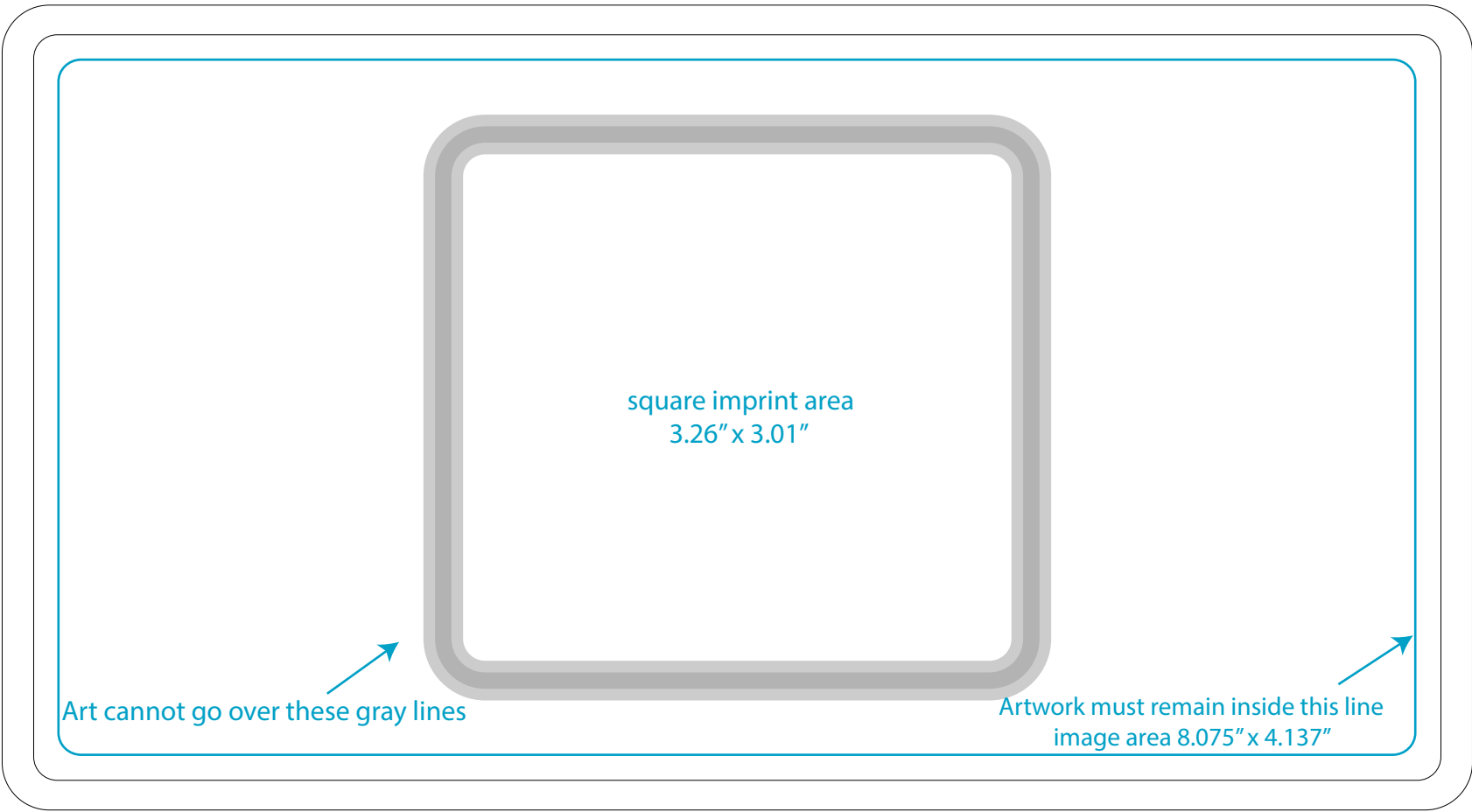
All fonts must "convert to paths". **.eps** is the acceptable file format. Embed images - linked images won't work.

is the only acceptable file format. Embed images - linked images won't work.

files are not accepted for making chocolate molds.

convert these files types to vector. Please contact your sales rep for more information.

## 8oz. or 1lb. CHOCOLATE COMBO BAR with SQUARE CENTER



**Art must be VECTOR art.**

**Black art is engraved. White art is raised.**

In order for your art to show well in chocolate:

- fonts should be at least 12pt
- lines and details, and spaces in between lines and details should be at least a 1pt thickness and prominent lines should be thicker.
- convert all fonts to objects